

SANITRONICS

HYGIENIC TOILET SYSTEMS



“

When we used to drive around Europe,
we often passed by a public toilet.

When using those toilets I always said to my
children:

"You don't touch **ANYTHING** with your hands!"

The lack of Hygiene was a driving force for
me to work with Sanitronics to solve
the mediocre quality of toilet solutions in
public areas. My vision:

everyone is at all entitled to a safe and
hygienically clean toilet at all times.

”

Introduction

The Revolving Toilet is a toilet facility made of high-quality materials and features a self-cleaning system.

To ensure that the high quality is maintained, the cleaning maintenance should be carried out regularly and performed consistently.

Please follow the enclosed instructions carefully to achieve this goal.

Should you have any questions about cleaning, please do not hesitate to contact us on working days between 9am and 4pm (tel: 0031 10 2451840). Should you find a fault or have a technical question, please feel free to call us at any time.

The toilet actually consists of two toilet bowls that rotate after each use between the user space and the technical area. The used toilet is first flushed (if a visitor has not done so himself), then rotates to the technical room where it is internally and externally is completely hosed down and disinfected. It will be clear that such a high-quality product also needs regular and proper maintenance to provide its users with a clean and working facility. At the same time, this will prevent unnecessary malfunctions which will benefit the life of the toilet.



Getting to work

Before you begin, please watch the general cleaning video [here](#).



Overall Control and Safety.

On-site (or remotely by Sanitronics staff), we can monitor every aspect of the toilet's operation. It's important to know how to do this safely.

Keep everyone safe with these 3 tips:

1. Do not operate the controls when a person is using the toilet.
2. Avoid using controls that you are not certain about.
3. Always log out after use.



Status of the toilet:

Below are the possible colours on display and their corresponding meanings.



Toilet available and working.



Toilet occupied.



Toilet out of order
(Outside of opening hours or during a malfunction).



Toilet in cleaning mode.



Instructions

Before starting cleaning operations:

- Check carefully if the toilet is not in use.
- Always work with cleaning gloves!
For removing (a lot of) dirt on the floor, it is advisable to use cut and needle resistant gloves.

Open the technical room door and move the toilet unit into cleaning mode.

Via the PLC screen, the toilet unit can be put into cleaning mode by pressing the cleaning button. In this mode, the visitors' room door will remain open for about 20 minutes. Should the door close after the aforementioned time, the button can be set to cleaning mode again. Should you find yourself in the toilet area room while the door is closing, Exit the space using the large white button located inside next to the door. The door will open automatically and you can reset the timer in the maintenance room.



PLC Cabinets

How do I operate the PLC?

All our units have a PLC cabinet in which all information about the unit can be found. Not everything applies when cleaning the unit.

Below you will therefore find the information applicable for cleaning.

Please note that there are different versions so the screen in the unit may look slightly different.

PLC 1



1. Put into cleaning mode.

To put the unit in cleaning mode, click on the '**Next**' symbol on the display. In the menu that is now visible, click on the '**cleaning**' symbol, and the unit will enter cleaning mode. You can now begin cleaning the user area of the unit. The display should now change to blue.



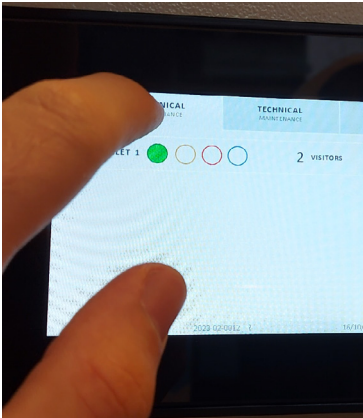
2. Rotating the Revolving Toilet.

After cleaning the user area, the Revolving toilet should be rotated. This action is also performed on the display.

Click on the '**180 Dgr**' symbol, and the Revolving toilet will rotate 180 degrees, allowing you to clean the toilet bowl that has now come forward in the user area.

Click [here](#) for the video on operating the PLC 1.

PLC 2



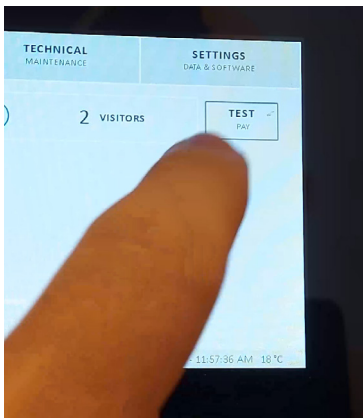
1. To put it in cleaning mode.

To put the unit in cleaning mode, press '**HYGIENICAL**'.

Then, select the '**CLEANER**' option in the menu.

The door of the operating space will be automatically unlocked (or will open if it is a sliding door).

The unit will remain open for the set time and will be in cleaning mode. You can now safely perform cleaning operations.



2. To rotate the Revolving Toilet.

To enable the rotation of the Revolving toilet, set the unit back to '**AUTO**'. The unit door will close automatically.

Next, click on the **HOME** symbol and select '**TEST PAY**'.

The door will now open. To initiate the cleaning, you must first be inside the unit when the door is closed.

Once you leave the space, the cleaning and rotation cycle of the Revolving Toilet will begin.

Please note: this will only work if the sensors no longer detect anything inside the unit.



Click [here](#) for the video demonstrating how to operate the PLC 2

Control visitor space.

Do a general check of the room; remove loose dirt on the floor, check the amount of toilet paper and replenish if necessary, and replace the dirty waste bag for a new one. Both the toilet paper holder and the waste bin require a key is needed to open the lock.



For the correct use of the toilet roll holder, we recommend watching this video: [watch this video](#).

Cleaning operations by cleaning agent.

We have different types of cleaning products we work with that have been tested and matched to our toilets.

Sani-Sol Descaler Plus:



For the correct application of Sani-Sol Descaler Plus, click [Here](#) for the Video.

Use pure descaler and a sponge to clean the washbasin, as well as the taps. Leave to soak for a while and then rub it clean.

The descaler is also used for the toilet seat and inside the toilet bowl.

Mixed descaler (with water) we use for the outside of the toilet bowl, the walls, stainless steel plates, the stainless steel ledge near the floor and if present for the baby changing table. It can also be used for the mirror be used.

After cleaning the mirror, it is best to always use a dry cloth (microfibre cloth) to rub the mirror after. This gives a completely mirrored surface without any drying streaks.

Sani-Sol Oil:



Where do I use Sani-Sol Oil for?

- Click [here](#) for the video.

How to use the HAND Stand?

- Click [here](#) for the video.

We use the oil in the spray bottle to polish all the stainless steel in polish in the unit for a nice clean result. Clean and dry the surfaces first. Be sure there is no dirt or any contamination on the surfaces before applying the oil. Only a small amount of this product is needed. Rub it out in a thin layer over the entire surface. Let it sit for some time (about 5 minutes) and then rub it out again with a clean dry cloth.

The door and doorposts should be treated with the oil, both on the outside and inside. The door can be gently pulled closed by hand. This can be done by setting the position of the black box in the technical area to HAND. You will find an explanation in the instruction video. Always wipe the area near the user door well. Sand between the entrance and the door can cause a malfunction. Do not forget to put the locker back in MOON position afterwards, otherwise the toilet unit will continue to malfunction.

Treat all other stainless steel parts as well; plates, the mirror edge, the stainless steel of the toilet, arm supports if present, the toilet roll holder and the waste bin. Make sure there is no oil on the sensors/control panels or the outlet of the taps.

Sani-Sol Nanocoating:



For the correct treatment of Sani-Sol Nanocoating, click [Here](#) for the Video.

We use the nanocoating for the toilet seat. These are the last works of the toilet. In the technical room, the toilet bowl can now be turned. The one from the technical room turns to the visitors' room so it can be polished as we cleaned the first one too.

- Pure descaler for the toilet seat and in the bowl.
- Descaler mixed with water for the outside of the pot.
- Working the stainless steel with the oil in the spray bottle.
- And as a final touch, the coating on the toilet seat.

When the walls are very dirty, apply the Sani-Sol Nanocoating. It makes the surface smoother so dirt will no longer adhere well, the surface becomes water and dirt repellent.

The end result is a beautiful and fresh-looking toilet.

Sensors in the toilet are wiped with a dry clean cloth (without any detergent).



For more information on the cleaning products themselves, head to the **Cleaning products section**.

Cleaning of the floor

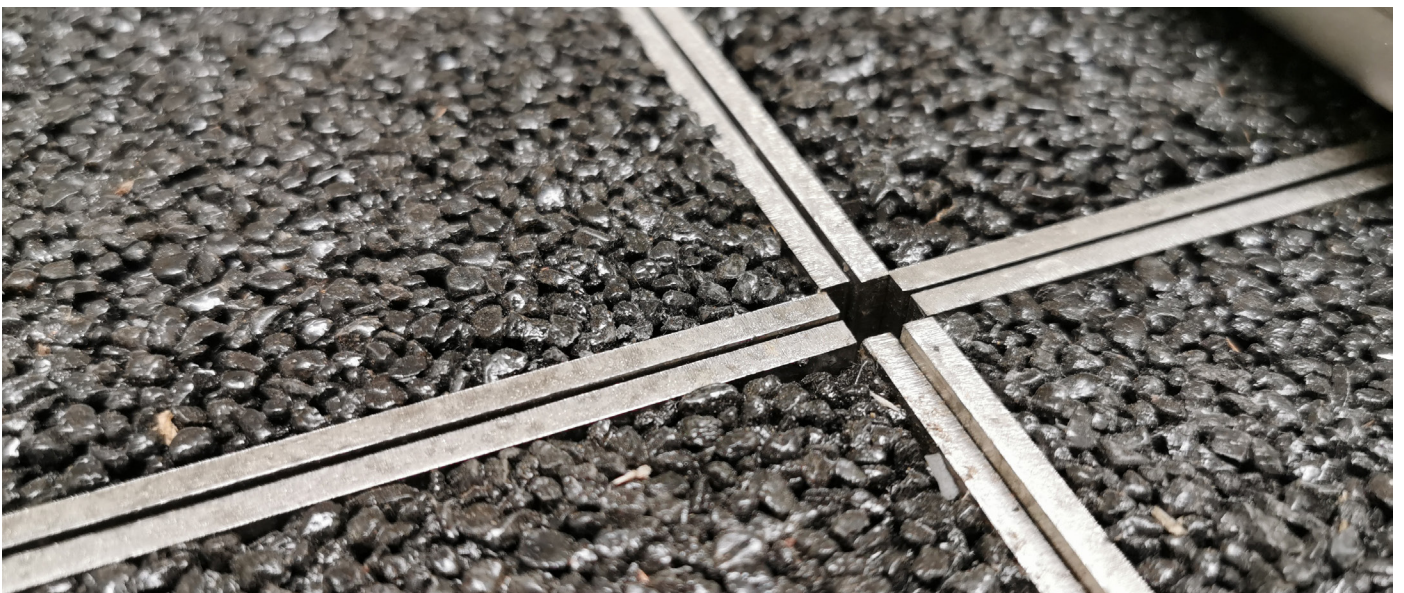
The floor is made of a special composition to make it permeable to water. Maintenance is necessary to prevent the floor from slipping and losing its function.

Should the floor turn white, it is wise to treat it:

- Remove all loose dirt from the floor.
- Lightly moisten the floor and spread some pure Sani-Sol Descaler on the floor and carefully scrub this into the floor with a hard broom. Let the floor soak for about 10 minutes. Then rinse the floor carefully with plenty of water.



Click [here](#) for the video of the floor treatment



It is advisable to remove the floorboards from the toilet unit at least once a year and hose them down with a pressure washer. For the instruction video click the link [here](#). The floor sections can be lifted using, for example, a screwdriver or other item.

- Remove all loose dirt from the floor.
- Remove all floor panels and lay them outside the toilet unit with the top up (as in the toilet).
- Lightly moisten the floor and spread some pure Sani-Sol Descaler over the floor and carefully scrub it into the floor with a hard broom.
- Let the floor soak for about 10 minutes.
- Then clean the floor with a pressure washer on both sides, rinse well.
- After this, empty the water basin (a basin with rinse water under the floor) in the unit with a hydrogen Hoover. After this, immediately start cleaning the reservoir, vacuuming. Once it is clean, the tiles can be put back in place.



In regions where the water is hard, and therefore the water contains a lot of lime, the floor may turn white. This also happens if maintenance is inadequate. In that case, it is necessary to repeat the above activities more often.

Technical area

Reservoirs can be replenished in the technical room;

Daily cleaner, descaler and hand wash.



The containers with daily cleaner and descaler are filled with $\frac{1}{4}$ soap, remaining replenish with water. With the hand soap, only the appropriate soap goes in.



Loose dirt is removed in the technical area. Make sure that the rotating system is not obstructed, leave enough space to allow the cover to be control without bumping into anything.



The cover needs a minimum cleaning of once every two months. The inside is cleaned with diluted Sani-Sol Descaler Plus. After cleaning, the cover can be can be wiped off with a dry microfibre cloth. Don't forget to wipe the toilet bowl underneath dry as well.



Click [here](#) for the video of how to properly clean the cleaning cover.

Roof

Depending on the type of roof, some checking is required. Make sure no dirt is left on the roof. Should it be a sedum roof, it is advisable to water the plants a little in warm weather.



Completion of work

The toilet unit can now be taken out of cleaning mode again. The visitor room door closes automatically after the cleaning mode is removed. Check on the text plate that the green light is on. Do not forget to lock the door of the technical room again.



Frequency

Our cleaning guidelines:

Exterior

- Check, clean exterior walls. (Weekly)
- Remove any graffiti.
- Clean the roof. (Quarterly)
- Apply nanocoating to the walls and roof. (Half-yearly)

Interior

- Clean the walls and ceiling. (Weekly)
- Scrub/clean the toilet bowls. (Weekly)
- Clean the floor (normal cleaning). (Monthly)
- Intensive floor cleaning. (1-2× per year)
- Empty and clean the waste container. (Weekly)
- Clean and refill the toilet paper container. (Weekly)
- Clean the complete washbasin and mirror. (Weekly)
- Check the soap dispenser for operation. (Weekly)
- Treat the entrance door with Oil (Weekly)

Technical room

- Check and refill all reservoirs. (Weekly)
- Remove loose dirt. (Weekly)
- Check operation. (Weekly)
- Toilet flush manually. (Weekly)
- Check lighting. (Weekly)
- Check hand washing facilities. (Weekly)
- Check that the door inside and outside is clean is clean. (Weekly)
- Manual cleaning of the cleaning hood (2 Monthly)

"For those units where much more extreme usage occurs, a higher frequency is recommended."

Cleaning products

Below is the complete list of Sani-Sol products.



Sani-Sol Descaler Plus:

Application: Periodic removal of lime and urine scale. Safely applicable to all acid-resistant surfaces.

Properties: Strong acid cleaner. Effortlessly removes urine scale and limescale. Does not contain aggressive acids such as hydrochloric acid.

Directions for use: Apply undiluted, then leave to work for 5-10 minutes. Remove dirt with scouring pad or hand pad, rinse thoroughly with water.

Caution: Do not use in combination with chlorine bleach or lye. Not applicable on acid-sensitive materials.

Safety data sheet available on request.



Sani-Sol Oil:

Application: Treatment of stainless steel parts. Shiny appearance and dirt-repellent through protective film layer.

Properties: Liquid treatment agent, applies film layer to stainless steel parts. Apply undiluted using a cloth to the surface to be treated.

Directions for use: Apply undiluted with a cloth to the surface to be treated. Then spread as thinly as possible over the surface.

Attention: This product is highly flammable and contains Aliphatic hydrocarbons <70%.

Safety data sheet available on request.



Sani-Sol Nanocoating:

Application: On dense substrates such as: glass, plastic, stainless steel galvanised, anodised, painted and enamelled materials. Makes the surface smoother, preventing dirt from adhering.

Features: Sani-Sol Nanocoating enhances the gloss, has a reconditioning and makes a surface especially water and dirt-repellent. Furthermore, it slows down the destructive effect of UV.

Directions for use: (Shake bottle before use) Carefully clean the surface and then use a little Sani-Sol Nanocoating on a microfibre cloth, spread on dry surface. Soak for 5 to 10 minutes. Then rub lightly with a soft (microfibre) cloth.

Safety data sheet available on request.



Sani-Sol Hand soap:

Application: Liquid skin-friendly hand soap.

Properties: Pleasantly foaming, good cleansing neutral hand soap. Contains skin-care ingredients and a powerful emulsifier.

Directions for use: Fill soap dispenser with the undiluted product, 3ml. is enough to clean the skin.

Ingredients: Aqua, Sodium Laureth Sulphate, Sodium Chloride, PEG-4 Rapeseedamide, Cocamidopropylbetaine, Glycol Distearate, Perfume, Laureth-4, Citric Acid, Propylene Glycol, Benzyl Alcohol, Methylchloroisothiazolinone, Methylisothiazolinone, 2-bromo-2-nitropropane-1,3-diol, Linalool, Geraniol, Amylcinnamyl Alcohol. CI 16255.

Safety data sheet available on request.



Sani-Sol Micro Daily Cleaner:

Application: Deodorisation preparation based on natural micro-organisms for daily use.

Properties: Permanently dispels bothersome odours. The micro-organisms break down odours by attaching themselves to the core of the soiling. The dirt is thus completely broken down.

Sani-Sol Micro Daily Cleaner cleans and also has a pleasant fragrance for refreshing the treated object.

Directions for use: Dilute, depending on the degree of soiling, 20 to 40 millimetres per 10 litres of water. In case of extreme soiling, use a peak dose once.

Safety data sheet available on request.



Cleaning products

Proper cleaning with the right detergent and materials is essential for a long life of your product.

Should you require more information after reading our advice, we will be happy to assist you. Feel free to send an email with your questions, or for pricing information of our cleaning products and/or toilet paper to wc@sanitronics.com.

We sell:

- Sani-Sol Daily Cleaner
- Sani-Sol Descaler
- Hand Soap
- Sani-Sol Oil
- Sani-Sol Nanocoating
- Toilet paper rolls
- Toilet paper sheets



Video Index

- Overall Manual cleaning: [Click here](#)
- Cleaning cover: [Click here](#)
- Access door treatment: [Click here](#)
- Floor tile cleaning: [Click here](#)
- Toilet paper roll replacement [Click here](#)
- Cleaning the sensors [Click here](#)
- Treating stainless steel parts [Click here](#)
- PLC 1 - How does it work?: [Click here](#)
- PLC 2 - How does it work?: [Click here](#)

**"Below you'll find a list of playlists available in various languages:
English, German, and French."**

- Overall Manual cleaning: [Click here](#)
- Cleaning cover: [Click here](#)
- Access door treatment: [Click here](#)
- Floor tile cleaning: [Click here](#)
- Toilet paper roll replacement: [Click here](#)
- Cleaning the sensors: [Click here](#)
- PLC - How to use it?: [Click here](#)
- Treating stainless steel parts: [Click here](#)





Visit us

[Sanitronics International B.V.](#)
[Schuttevaerweg 73](#)
[3044 BA Rotterdam](#)
[The Netherlands](#)



Contact us

+31 (0)10-245 18 40
www.sanitronics.com
wc@sanitronics.com

SANITRONICS
HYGIENIC TOILET SYSTEMS

